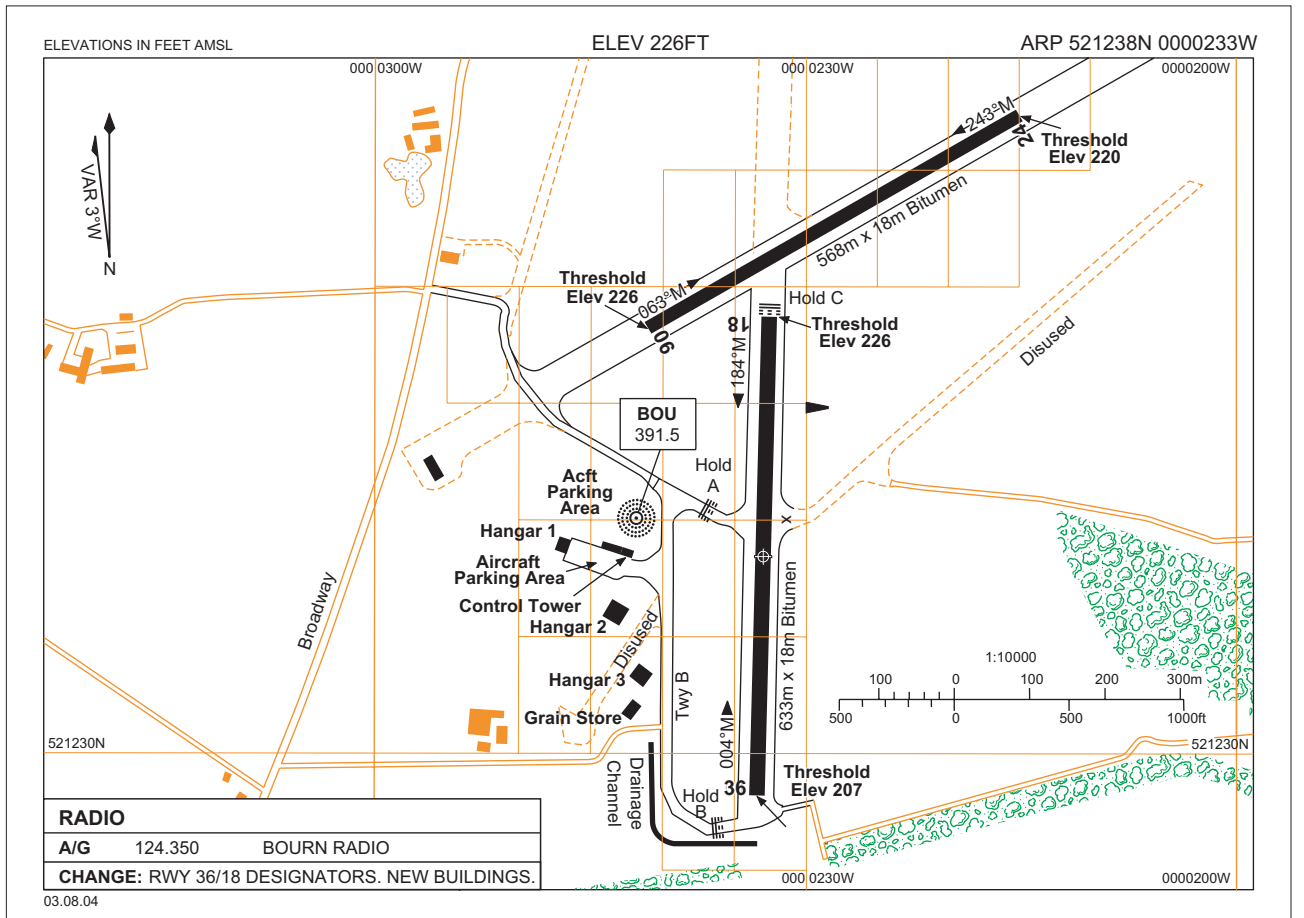


EGSN AD 2.1 EGSN BOURN



EGSN AD 2.2 – AERODROME GEOGRAPHICAL AND ADMINISTRATIVE DATA

2	Direction and distance from city:	7 nm W of Cambridge.
6	AD Administration: Address:	Rural Flying Corps. Bourn Aerodrome, Bourn, Cambridgeshire, CB3 7TQ.
	Telephone:	01954-719602.
	Fax:	01954-719602.

EGSN AD 2.3 – OPERATIONAL HOURS

1	AD:	Winter: 0930-1700 or SS. Summer: 0830-1700.
2	Customs and Immigration:	By arrangement.
7	ATS:	A/G (ATZ) as AD hours (see remarks).
8	Fuelling:	Not available for visiting aircraft.
12	Remarks:	This aerodrome is PPR . Aerodrome/ATZ is closed/inactive on all Bank Holiday Mondays. See also AD 2.20.

EGSN AD 2.6 – RESCUE AND FIRE FIGHTING SERVICES

1	AD Category for fire fighting:	RFF Category Special.
---	--------------------------------	-----------------------

EGSN AD 2.10 – AERODROME OBSTACLES					
In Approach/Take-off areas			In circling area and at aerodrome		
1			2		
Runway/Area affected	Obstacle type Elevation (ft amsl) Markings/lighting	Co-ordinates	Obstacle type Elevation (ft amsl) Markings/lighting	Co-ordinates	
a	b	c	a	b	
			Radio tower Relay tower (Lgtd)	440 391	521254.90N 0000209.80E *521302.86N 0000252.86W
3 Remarks:		Nil.			

EGSN AD 2.13 – DECLARED DISTANCES					
Runway Designator	TORA (m)	TODA (m)	ASDA (m)	LDA (m)	Remarks
1	2	3	4	5	6
38 18	633 633	633 633	633 633	633 633	
06 24	568 568	568 568	568 568	568 568	

EGSN AD 2.17 – ATS AIRSPACE		
Designation and lateral limits	Vertical limits	Airspace Classification
1	2	3
Bourn Aerodrome Traffic Zone (ATZ) Circle radius 2 nm centred on longest notified runway (36/18) 521238N 0000233W.	2000 ft aal SFC	G †
4 ATS unit callsign: Language:	Bourn Radio. English.	
5 Transition Altitude:		
6 Remarks:	† Refer to Section ENR 1.4 for Notifications. See AD 2.3 for ATZ hours.	

EGSN AD 2.19 – RADIO NAVIGATION AND LANDING AIDS							
Type of Aid MAG Var CAT of ILS/MLS	IDENT	Frequency	Hours of Operation		Position of transmitting antenna co-ordinates	Elevation of DME transmitting antenna	Remarks
			Winter	Summer			
1	2	3	4 # and by arrangement		5	6	7
NDB	BOU	391.5 kHz	H24	H24	*521240.09N 0000241.77W		On AD. Range 15 nm.

EGSN AD 2.20 – LOCAL TRAFFIC REGULATIONS
<p>Aerodrome Regulations</p> <p>(a) The aerodrome is not available for use by public transport flights required to use a licensed aerodrome.</p> <p>Warnings</p> <p>(a) The aerodrome is located on part of a disused aerodrome on which other air and vehicular activities take place outside the licensed area.</p> <p>(b) Visiting pilots are reminded that intensive gliding takes place at Gransden Lodge (521041N 0000653W) with winch launching cables to 2000 ft.</p>